

Owner's Warranty Record
(To be completed by installer)

Owner's Name: _____
Tel No': _____ Mob No': _____
Vehicle Make: _____ Vehicle Model: _____
Year: _____ Registration No': _____
Alarm installed by: _____
Date installed: _____ Tel No': _____
Alarm model: _____ Alarm code No': _____
Installer Signature: _____ Owner's Signature: _____

Warranty Conditions

This warranty warrants for a period of 24 months (Remote Control Transmitters for 12 months) from the date of sale to the purchaser provided it has been installed by an authorized installer. If the alarm is installed by anyone other than an approved installer a 12 month parts only warranty applies.

This warranty is void if damage is caused by incorrect installation; improper fitting and testing; physical or electrical misuse; damage by water or fluid and heavy shock; charge will be rendered if damage can be attributed to any of the above reasons. additional parts or accessories not supplied by manufacture.

CAR-246

**REMOTE CONTROLLED
CAR SECURITY SYSTEM**

OWNER' S MANUAL

CONTENTS:

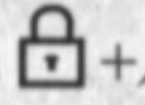
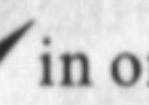


- ※ OPERATING INSTRUCTIONS
- ※ DESCRIPTION OF FUNCTIONS AND FEATURES
- ※ INSTALLATION GUIDE
- ※ WIRING DIAGRAM
- ※ WARRANTY CARD

OPERATING INSTRUCTIONS

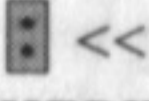
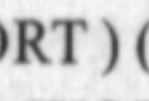
4 BUTTONS REMOTE CONTROL

FUNCTION	ARM	DISARM	MUTE ALARM MODE	ANTI-HIJACKING	PANIC/ CAR FINDING
PRESS				When ACC-ON Then 	

FUNCTION SETTING

FUNCTION	JP Position	METHOD
Auto Arming Operation (Option)	JP3	Short circuit
Electronic / Air Compressor Lock	JP2	Electronic Lock: Open circuit Air compressor Lock: Short circuit
Door trigger selection	JP4	Negative trigger "-", positive trigger "+" (Setting inside the main unit)
Direction Lighting Blink (Option)		Press  +  in one time simultaneously, Close the function, press  +  once more, Open it.

NOTE:

1. THE SYSTEM SET JP2 JP3 OPEN CIRCUIT MODE DURING PRODUCTION.
2. ICON OF INDICATING SHORT CIRCUIT & OPEN CIRCUIT. ( << SHORT) ( << OPEN)
3. DO ALL SETTING IN NO POWER SUPPLIED CONDITION, OTHERWISE WORKLESS.

DESCRIPTION OF FUNCTIONS & FEATURES

A) ARM THE ALARM

- (a) Siren will chirp once and lights flash once.
- (b) If equipped with central door lock, doors lock automatically.
- (c) Alarm is armed, the L.E.D blinks, engine can't be started.
- (d) If any door is opened (or dome light is delayed), the siren will chirp four times, and the parking lights will flash four times. If the door is still kept open 20 seconds later, the system will be activated.

B) DISARM THE ALARM

- (a) Siren will chirp 2 times and lights flash 3 times.
- (b) Power door will unlock automatically.
- (c) Alarm is disarmed and returns to its normal status.
Please also refer to "AUTO REARMING" feature.

C) MUTE ALARM MODE

- (a) Lights flash once, but siren will not chirp, doors lock automatically.
If any door is opened (or dome light is delayed), the light will flash four times.
- (b) If the alarm is triggered by shock, lights will flash, but siren will not chirp.
- (c) If the door is opened illegally, the siren will chirp and the alarm will be activated.
The siren will stop in 20+/-5 seconds and the system return to "ALERT" status.

D) AUTO-ARMING MODE (Option)

The alarm will activated automatically in one minute without any remote operating after the ignition key is turned off. lights flash one minute and siren will chirp 5 times.
Notice: the car will be arming, but the door will not be locked.
Please refer to FUNCTION SETTING.

E) PANIC, CAR FINDING

(a) Press \swarrow in normal arming mode, the siren will sound and lights will flash for 20+/-5 seconds. Press \swarrow again to stop.

(b) Press \swarrow in silent arming mode, the siren will not sound and lights will flash for 20+/-5 seconds. Press \swarrow again to stop.

(c) After the 20+/-5 seconds alarm cycle, the system will return to its previous status (armed or disarmed or silent alarm mode).

(d) Press \swarrow again to stop the status.

This feature can also be used as a car finding function to find the vehicle in a large car park

F) STOP SIREN TEMPORARILY

If alarm system is triggered, the siren goes off. By pressing \swarrow to stop the siren temporarily but the alarm system is still on arming mode.

G) CALL FOR EMERGENCY HELP

During disarming mode, press \swarrow , the siren will keep on and parking lights will keep flashing in order to call for emergency help. Press \swarrow again to stop the above operation.

H) DIRECTION LIGHTING BLINK (OPTION)

Press \square + \swarrow two buttons simultaneously, the car lighting won't blink when you park your car, and siren sound once indicating setting works. Press \square + \swarrow once more, the function will recover, and siren sound twice indicating setting finished.

SPECIAL FEATURES

1. AUTO RE-LOCK

After disarming, if the alarm has been connected with car central lock system, the car door will re-lock automatically after 20+/-5 seconds (unless any door has been opened or dome light is on).

2. VIBRATION RECORD

If the car is triggered by shock, the system will take a record about the vibration of the car and will give warning to the car owner by beeps when the alarm system is disarmed, so the car owner can check the car to make sure about the safety of the car.

3. WARNINGS OF IMPROPER CLOSED DOORS

If the doors are not properly closed, the lamps will keep flashing for 15+/-5 seconds in order to give warnings to other driver behind.

4. DRIVING LOCK

The alarm can also automatically lock the doors when you are driving as soon as you step on the foot brake and unlock when you turn the ignition OFF (unless the alarm orange wire dose not connect to the foot brake wire)

5. TWO STAGE SHOCK SENSOR

If the car body is impacted slightly, the siren will chirp 5 times and the parking light will flash 5 times. If the car body is impacted heavily, the siren will keep sounding for 25+/-5 seconds.

6. MEMORY ALARM MODES

If the car power is cut off whenever the system is armed or disarmed, the system will still commence in its original condition when the power is restored.

7. EMERGENCY DISARM

Turn the key to ON position in arming mode, the alarm system will be triggered. press the reset switch once, the power supply of the main unit will be cut off at once, and the system is disarmed. So the car owner can use the car. (In the condition of the remote control is lost.)

Note: Return to the arming mode, the reset switch must be OFF.

8. CODE LEARNING METHED

In this mode, the safety and reliability of the system are increased greatly for coding times over 1 million.

New code learning procedure:

(a.) During disarming status, stay inside the car, close the door properly, then step always on the foot brake, then open the door (now the lamps flashing).

(b.) Turn the ignition key from OFF-ON--OFF-ON-OFF-ON position 3 times, and keep ON position (while the lamps are kept lit). Press any key of the remote control until the siren chirps 3 times after 3 seconds, indicating that a new code is stored.

NOTE: All operating should be finished within 5 seconds, or else the system will cancel this learning.

TO LEARN ANOTHER REMOTE CONTROLLER, REPEAT PROCEDURE(a),(b). This system can be learnt up to 4 remotes.

9. REMOTE CONTROL CODE CANCELLATION

If the remote control is lost, it is necessary to cancel the remote control's code in the brain module for safety reason.

(a.) During the disarming status, enter the car, keep the door closed, step always on the foot brake, then open the door. Now the lamps flash.

(b.) Turn the ignition key from OFF-ON-OFF-ON-OFF-ON-OFF-ON-OFF-ON-OFF 5 times in 10 seconds and keep OFF position. while the lamps are kept lit, and the sirens chirp twice after 3 seconds, indicating that all control's code are cleared from the system.

10. DOME LIGHT DELAY

The alarm only functions when the car's dome light is off. If there is a delayed dome light in a car, the alarm system will delay to be armed until the dome light is off. The maximum delay time is about 25 seconds. If the dome light is still keeping on over 25 seconds after arming the alarm, the system will be triggered automatically.

WIRE CONNECTION DIAGRAM

See attachment to reference.

CENTRAL DOOR LOCK INSTALLATION DIAGRAM

See attachment to reference.

SYSTEM INSTALLATION GUIDE

Main Unit Installation

The main unit is suggested to be placed under the car low clash. After fixing the main unit in a suitable place, start connecting the wires in accordance to the **WIRE CONNECTING DIAGRAM**. Before putting back all the parts, test the system function first.

Warning: Before doing wiring connection, take the alarm " main fuse " off!

Shock Sensor Installation

It is recommended to place the shock sensor onto the steering column or steel bar under the low clash. Cable-tie the sensor securely. To adjust the sensitivity, use a screwdriver to turn the button on the shock sensor. Turn the button clockwise to increase the sensitivity, and counter-clockwise to reduce sensitivity.

CENTRAL LOCK INSTALLATION GUIDE

This system can hookup several types of car central locks

TYPE A:

For cars equipped with central lock but no motor on driver side, add master motor and rod. (see FIG 4). This type of installation is applicable to operate factory lock system in some FORD, Honda Mazda, and Nissan models.

*Installation tips: First install the actuator near the door's manual latch, then fix the rod of the actuator on the manual latch

TYPE B:

For cars equipped with central lock and with a motor on the driver's side. (see FIG 2, 3, 5)

TYPE C:

The door locks are controlled by electrical activated vacuum pump. (See FIG 6). The timing of actuator mechanism should be set as 3 seconds while the jp2 is on short circuit. For some Mercedes-benz and Audi models.

NOTE: The type B installation method is suitable for most of the cars.

SPECIFICATIONS OF ELECTRONIC

MAIN UNIT

Output current:	signal light 5A*2, siren 10A, central lock: 10A
Coding:	learning code
Voltage:	12±2V
Static Current:	<15mA (except indicator, sensor)
Indicator Current:	20mA intermittently
Shock Sensor Current:	<1mA
Frequency:	300MHz~350 MHz

REMOTE CONTROL

Voltage:	12V
Current:	0mA
Battery:	27A/12V
Frequency:	300MHz~350MHZ
Coding:	learning code
Coding times:	> 1 million

TROUBLE SHOOTING

The remote control does not work.

- *Check the battery level. It is suggest to replacing a new battery each year.
- *Check if the remote control has been moistened or crashed.

The remote control does not make the main unit work.

- *Check the battery level in the remote control.
- *Check if the remote control has learned the code with the main unit.
- *Check if the frequency of the remote control has changed.
- *If possible, use another control for comparison. If both of them do not work, check the main unit and the wire connection. (Do not open the main unit for checking)

The central lock does not work.

- *Check if the actuators are working.
- *Check wire connection
- *Check if the fuse of the main unit has blowed.

The siren does not sound when the system is triggered.

- *Check if the alarm pink wire has power when the button lock or unlock on the remote control is pressed.

- *Check the wire connection between the siren and main unit.

The siren keeps chirping while the main unit installs.

- *Check if the car battery voltage is low.
- *Check if the switch is positioned at ON status when the battery back-up siren is used.

The alarm sounds 10 seconds after the vehicle is armed, same problem keeps happening again.

- *Check if the shock sensor is too sensitive.
- *Check if the door pin switches are damaged.
- *Check if any car door has been opened.

The alarm is easily triggered when a heavy vehicle is passing through.

- *Check if the shock sensor is too sensitive.

CENTRAL LOCKING WIRING DIAGRAM

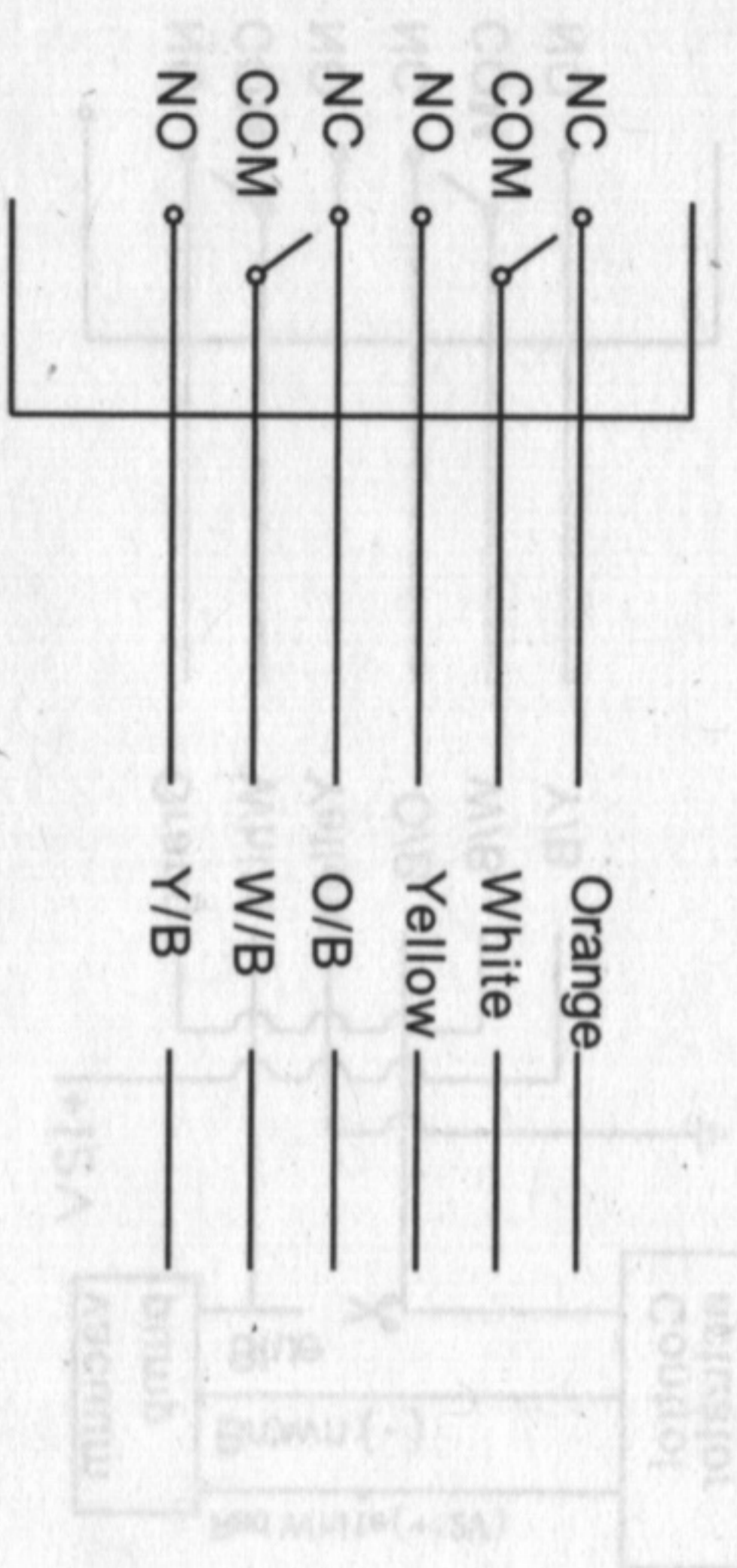


Fig. 1 Principle

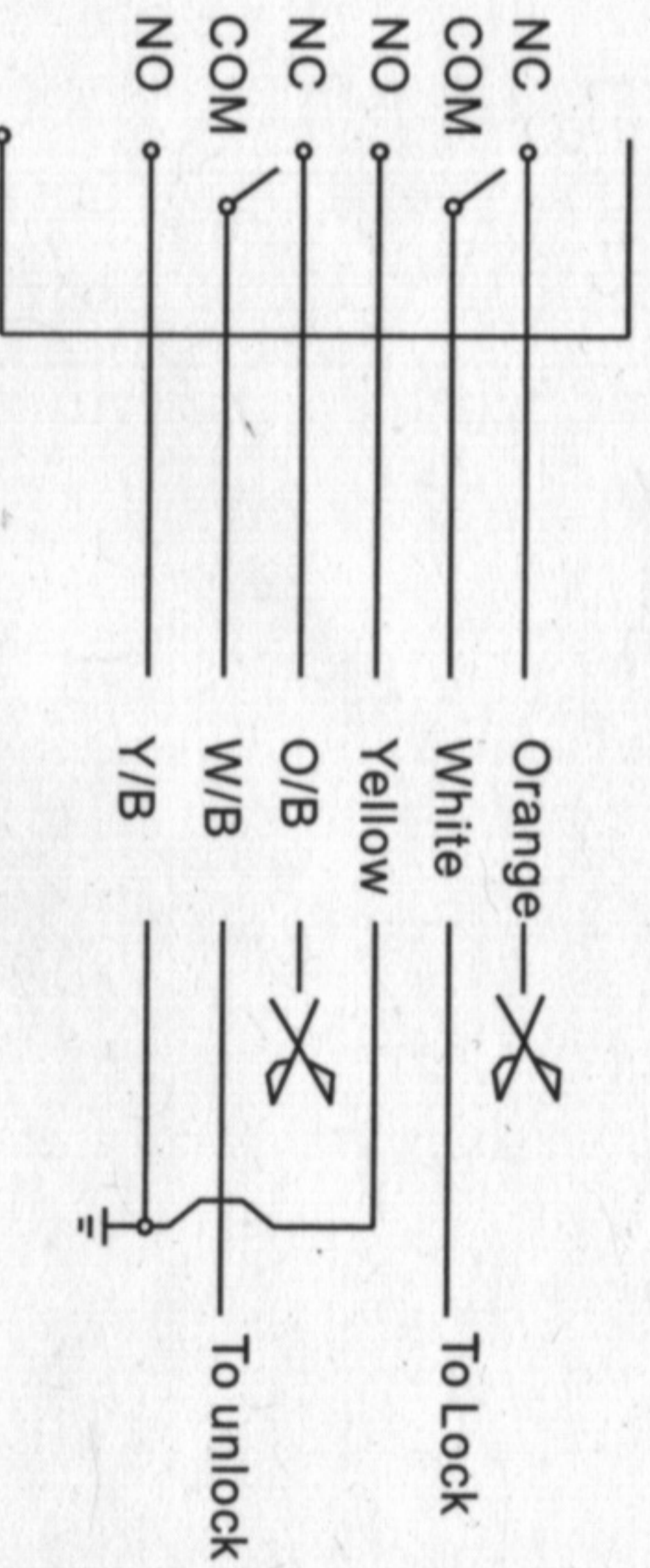


Fig. 2 Negative Trigger

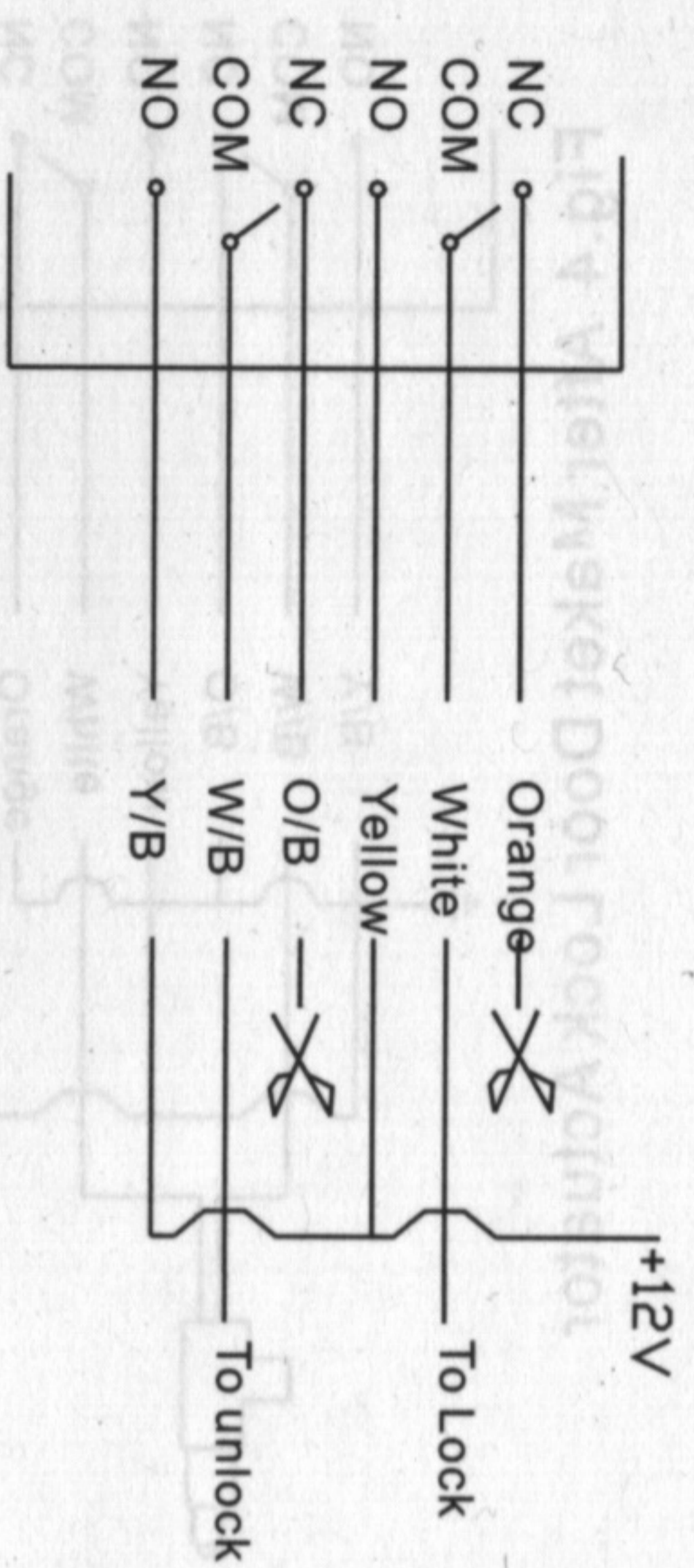
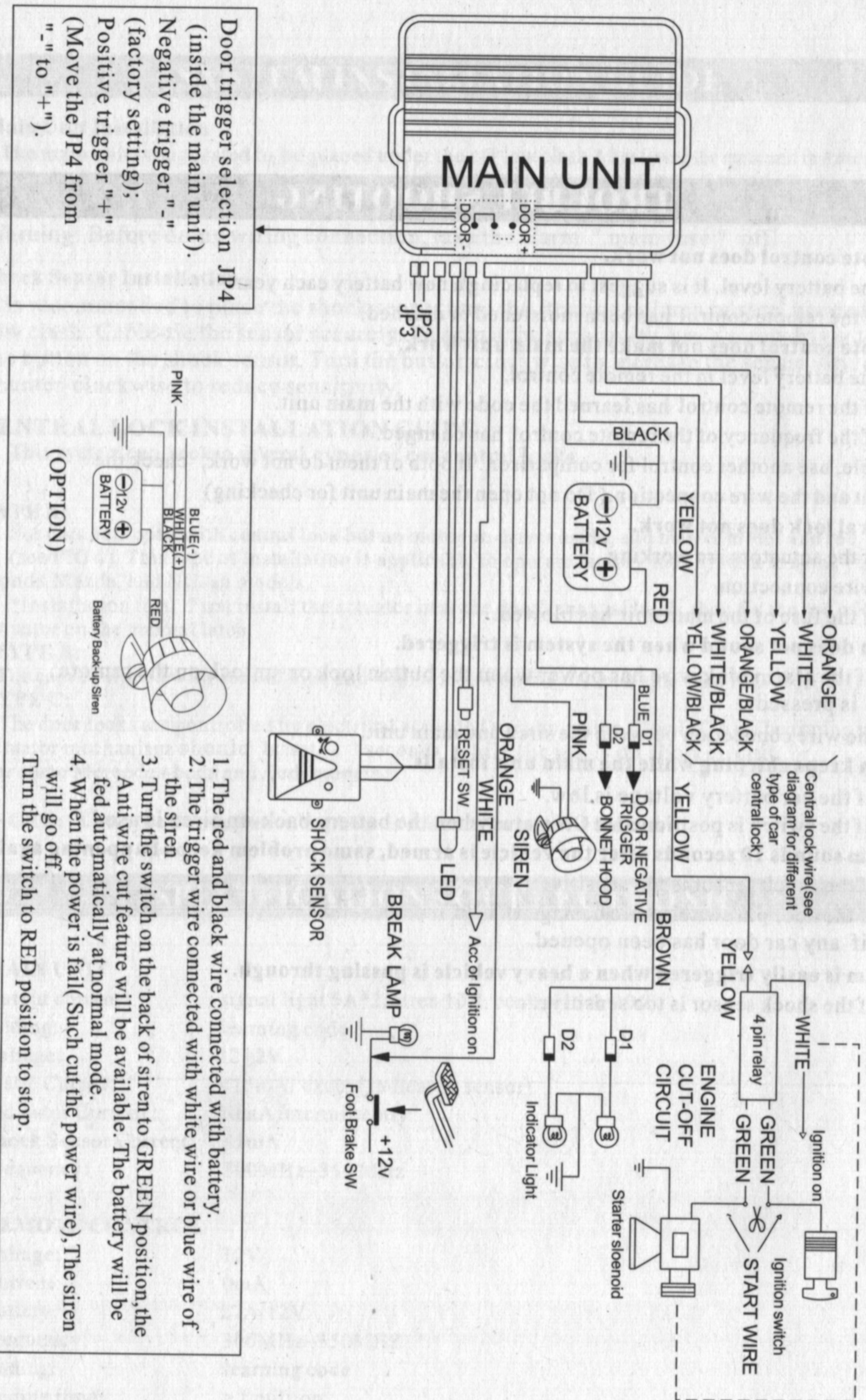
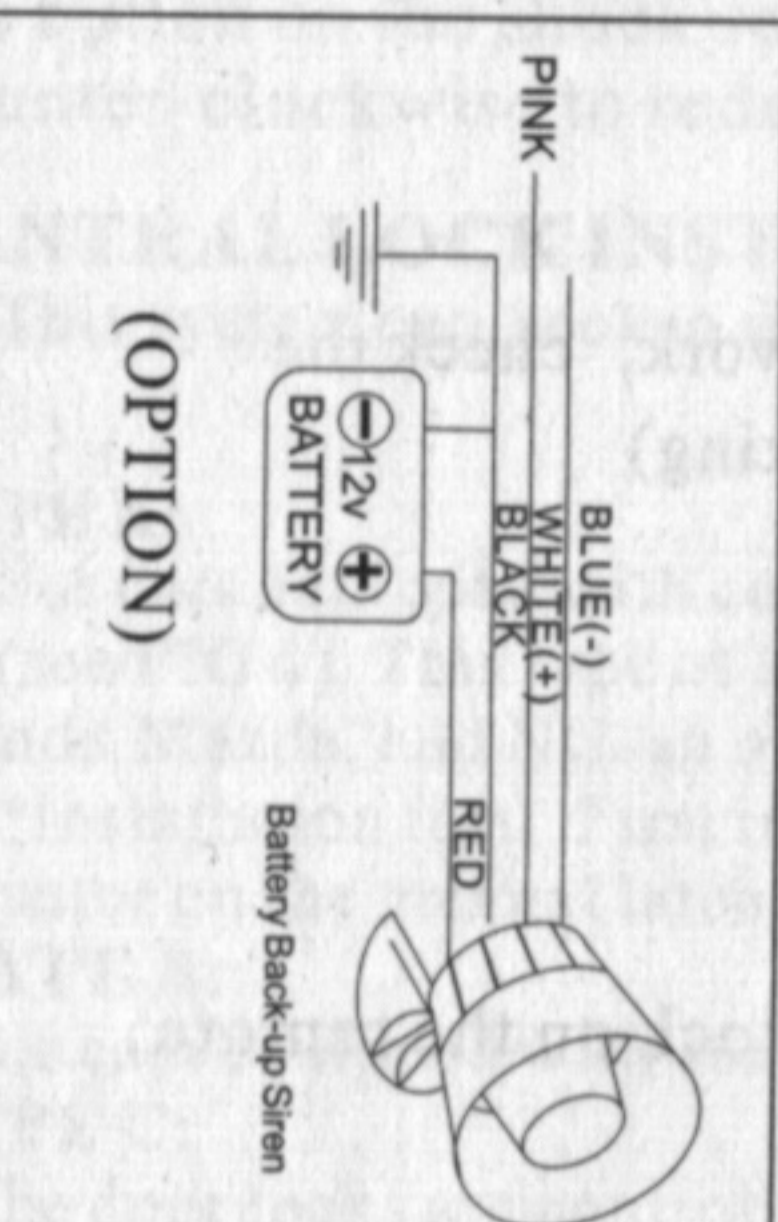


Fig. 3 Positive Trigger

WIRE CONNECTION DIAGRAM



Door trigger selection JP4 (inside the main unit).
 Negative trigger " _ " (factory setting);
 Positive trigger " + " (Move the JP4 from " _ " to " + ").



1. The red and black wire connected with battery.
2. The trigger wire connected with white wire or blue wire of the siren
3. Turn the switch on the back of siren to GREEN position, the Anti wire cut feature will be available. The battery will be fed automatically at normal mode.
4. When the power is fail(Such cut the power wire), The siren will go off.
 Turn the switch to RED position to stop.

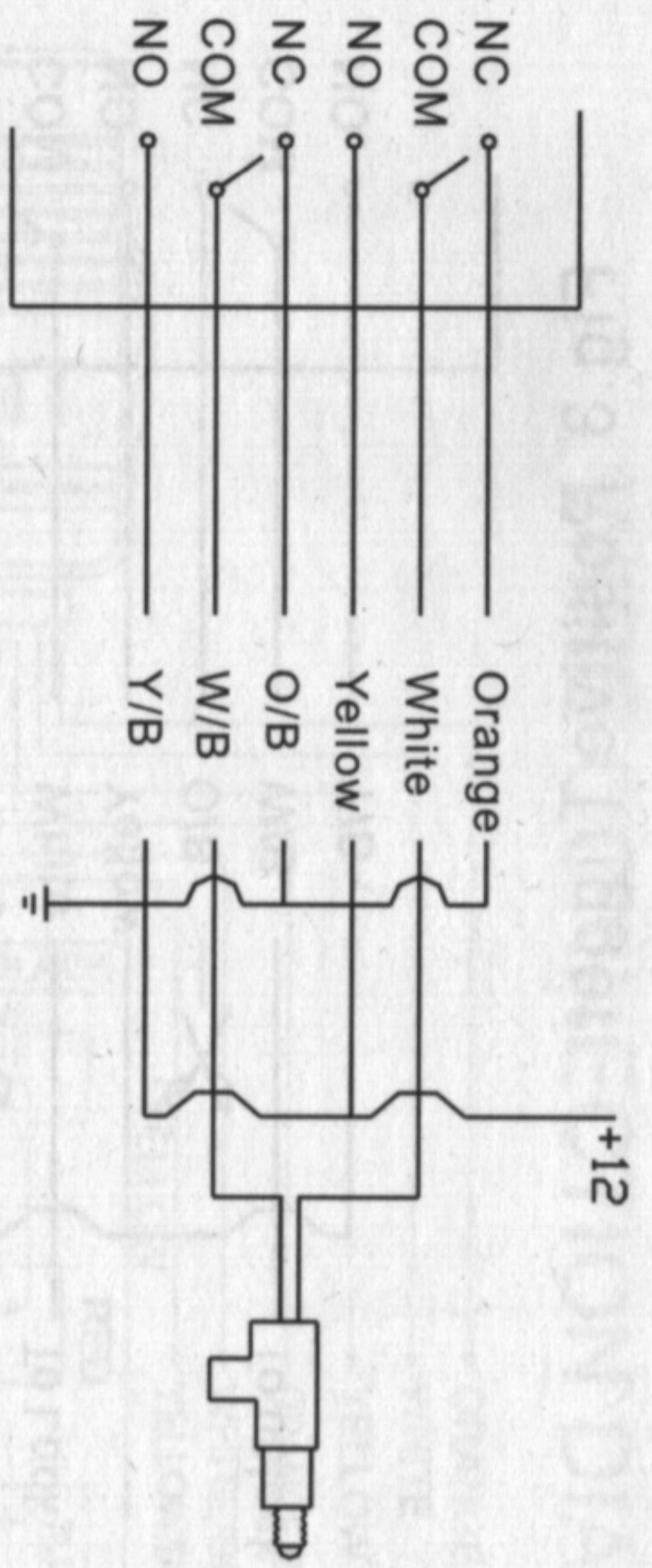


Fig.4 After Maket Door Lock Actuator

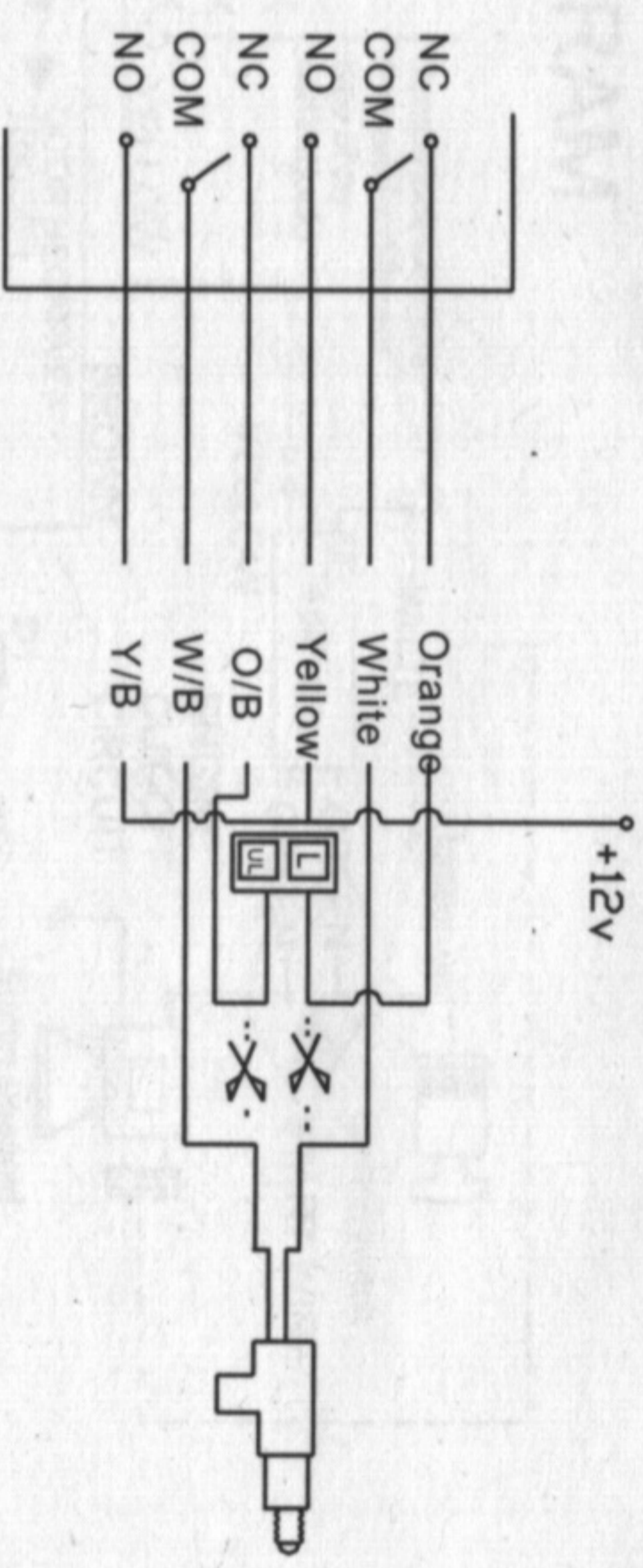


Fig.5 Reverse Polarity Switch To Factory Actuator

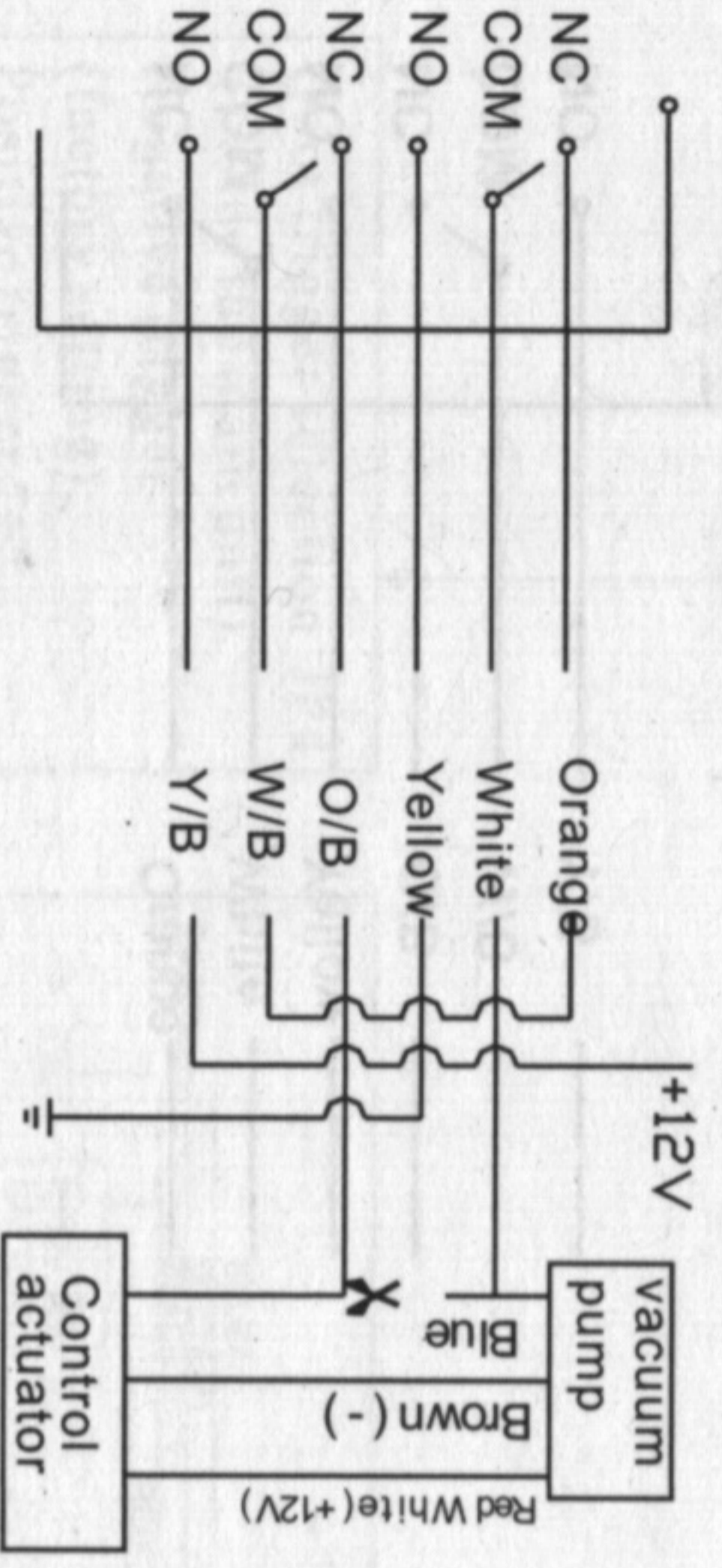


Fig.6 Vacuum Pump Type(Mostly Mercedes Benz)